

# NDB RWY 27

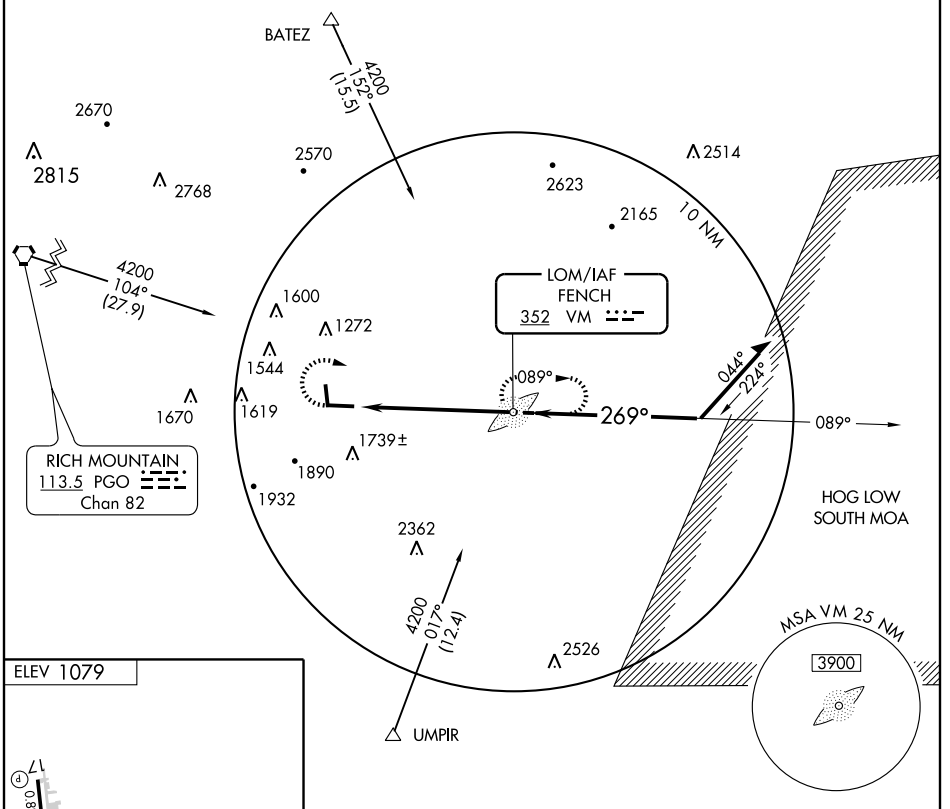
MENA INTERMOUNTAIN MUNI (MEZ)

LOM VM <b>352</b>	APP CRS <b>269°</b>	Rwy Idg <b>6001</b>
		TDZE <b>1058</b>
		Apt Elev <b>1079</b>

**▼** When local altimeter setting not received, use Fort Smith Rgnl altimeter setting and increase all MDAs 200 feet, increase S-27 Cat A/B visibilities ¼ mile, S-27 Cat C visibility ½ mile, and circling Cat A/B ¼ mile.

**▲ NA** MISSED APPROACH: Climbing right turn to 3600 direct FENCH LOM and hold.

AWOS-3 <b>118.025</b>	MEMPHIS CENTER <b>126.1 269.0</b>	UNICOM <b>122.8 (CTAF) 0</b>
--------------------------	--------------------------------------	---------------------------------



SC-1, 25 SEP 2008 to 23 OCT 2008

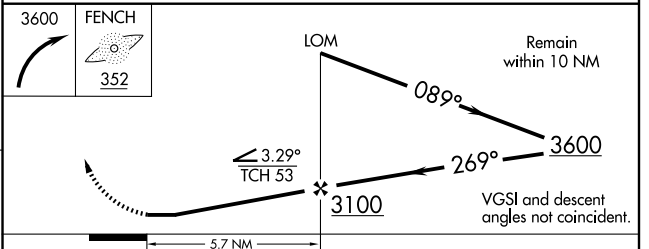
SC-1, 25 SEP 2008 to 23 OCT 2008

**ELEV 1079**

REIL Rwy 35  
MIRL Rwy 17-35  
HIRL Rwy 9-27

FAF to MAP 5.7 NM

Knots	60	90	120	150	180
Min:Sec	5:42	3:48	2:51	2:17	1:54



CATEGORY	A	B	C	D
S-27	1920-1 862 (900-1)	1920-1¼ 862 (900-1¼)	1920-2½ 862 (900-2½)	NA
CIRCLING	1920-1 841 (900-1)	1940-1¼ 861 (900-1¼)	2060-3 981 (1000-3)	NA