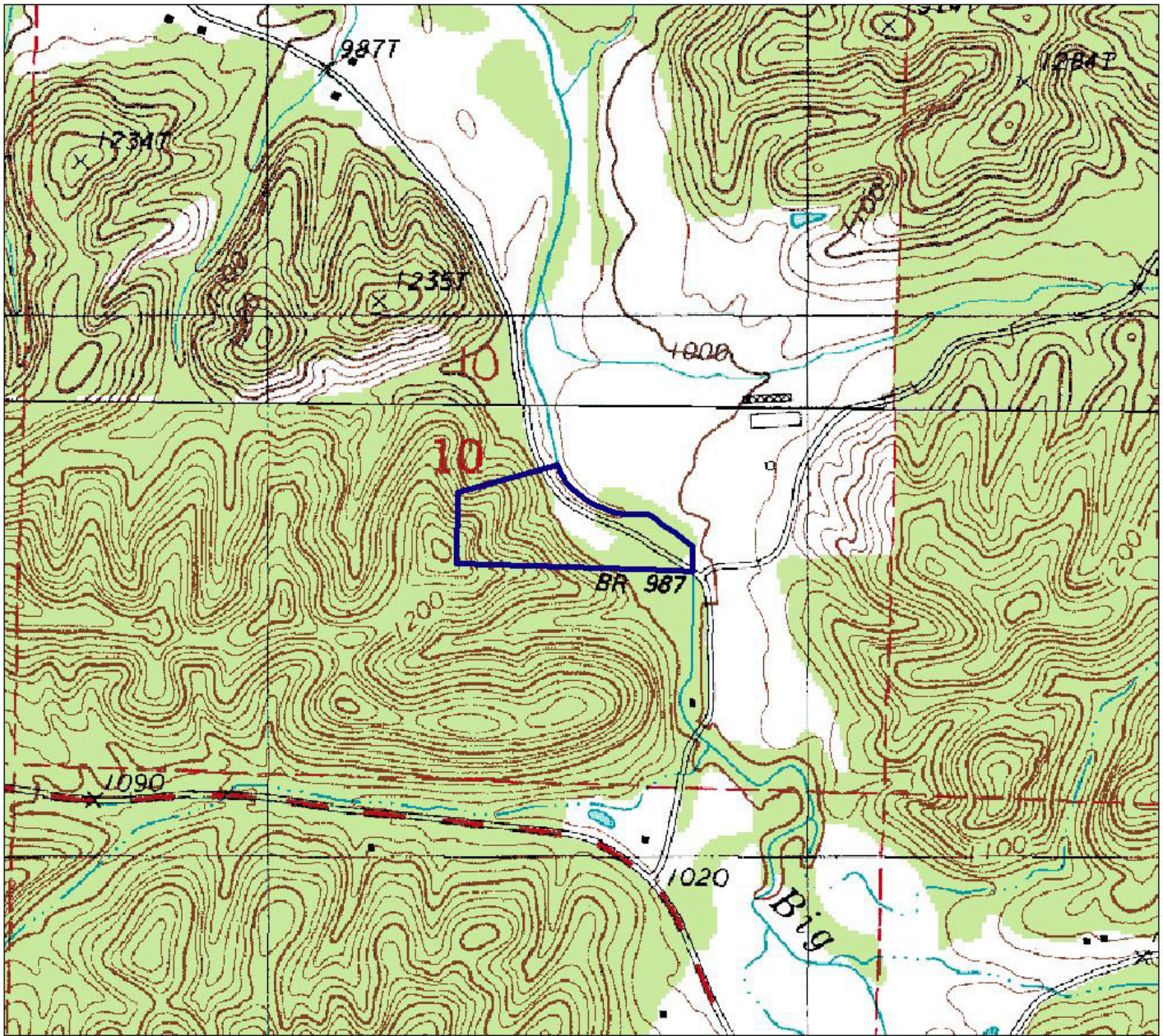


9/13/2006

Arkansas Natural Heritage Commission  
Department of Arkansas Heritage  
System of Natural Areas  
Approximate Natural Area Boundaries



Big Fork Creek Natural Area

County: Polk      Date Added To System: 1978      Acreage: 13.58

USGS Topographic Quadrangle: Big Fork 7.5'  
Township/Range: T03S/R28W      Section(s) 10      Contour Interval: 20 feet

Directions: Take State Highway 8 West at Big Fork. Travel 0.25 mile, then turn right on Polk County Road 67. Go 0.3 mile and bear left at the fork. Park on the north side of the county road.

