

[Back to Previous Listing](#)
Nan Gaddis, REALTOR

[Homes Outside Mena City Limits](#)
Home

[Forward to Next Listing](#)
[Subscribe to our e-Newsletter](#)

[View Listing](#)



[Click Here](#)
10204468

Real Estate Taxes: \$882.00
+/-
After homestead exemption of
\$350
Lock your taxes @ age 65 in
Arkansas

Timber Ridge Estates

Soaring ceilings greet you upon entrance into this home with a bank of windows displaying the woods off the back deck. Carefree landscaping, Formica floor covering in kitchen area.

Timber Ridge East Subdivision restrictions available in listing office. 2 propane bottles for fireplace stay.

Washer, dryer and refrigerator can stay if Buyer chooses. Window valances in kitchen and dining room DO NOT stay. Subject to a prior reservation of 1/2 of all mineral rights.



[Click on Photos Below to Enlarge](#)
1,866 sq ft of Living Area
3 bedroom/2 bath home
.63 Acres
List Price \$189,900

[Print Page](#)

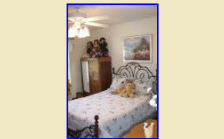
[E-Mail Nan Gaddis for more information: Nan Gaddis](#)

Instructions for Viewing Listings

If this is the first time that you have viewed our MLS Data Sheets in Acrobat Reader and you do not have it installed on your computer, please, click on [Get Acrobat Reader](#). It is a free download from Acrobat.



[Get Acrobat Reader](#)
It's FREE!



[Back to Top of Page](#)

This Community Web Site, www.VisionMena.com has been brought to you by
Vision Realty in Mena Arkansas, REALTORS®
500 Mena Street, P O Box 192, Mena, AR 71953
479-394-1111 ~ Fax: 479-394-0003 ~ Copyright 2001 through 2008
10/26/08 03:22 PM



For Information

E-mail:

Nan@VisionMena.com

